



UNIONE EUROPEA
Fondo Sociale Europeo



PhD in Geosciences - XXXII cycle

MICIA - Coastal flooding modeling and sea level changes vulnerability

Industrial partner



Environmental Surveys S.r.l. is a spin-off of University of Bari «Aldo Moro» which works in the geological and geomorphological fields, through extremely innovative technologies such as the Terrestrial Laser Scanner (TLS), LIDAR, marine geophysics, all implemented in a Geographic Information System (GIS).

Within the PhD project they will collaborate in the development of a prototype software to obtain submersion and flood maps.

International partner

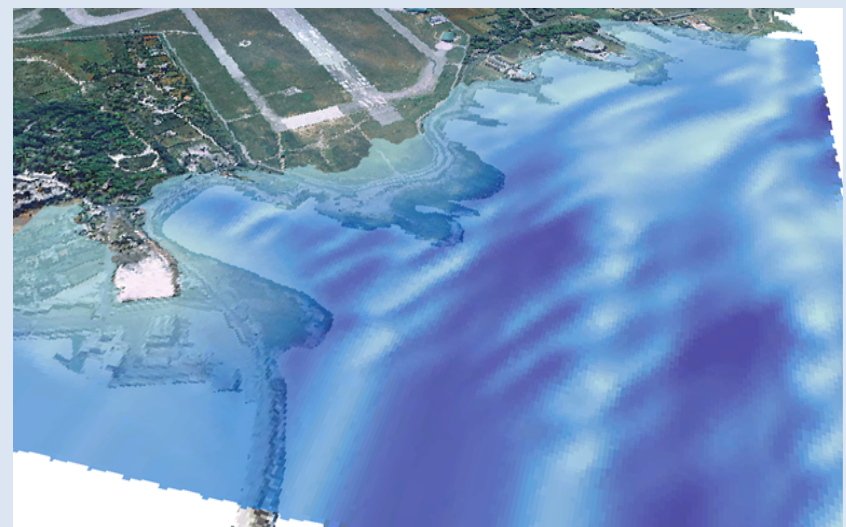


Centre Européen de Recherche et d'Enseignement des Géosciences de l'Environnement (CEREGE) belongs to University of Aix en Provence, where different professionals work in the field of the environment, physical geography and climatic changes

Within the PhD project they will collaborate in the analysis and numerical treatment of satellite images and aerial photographs.

Description of Activities

Geological and geomorphological surveys performed along Apulia coast stretches through modern methodologies (Terrestrial Laser Scanner, Total Station, Multibeam, Side Scan Sonar, Sub Bottom Profiler, video analysis) in order to characterize coastal environments.



Development of software prototypes interfaced in GIS environment to obtain submersion maps in response of sea level rise up to 2100 and flooding entity due to extreme marine events.

Industrial partner supervisor

Prof. Maurilio Milella en.su@libero.it

International partner supervisor

Prof. François Sabatier sabatier@cerege.fr

Supervisor

Prof. Giuseppe Mastronuzzi
giuseppeantonio.mastronuzzi@uniba.it

PhD student

Giovanni Scardino giovanni.scardino@uniba.it

